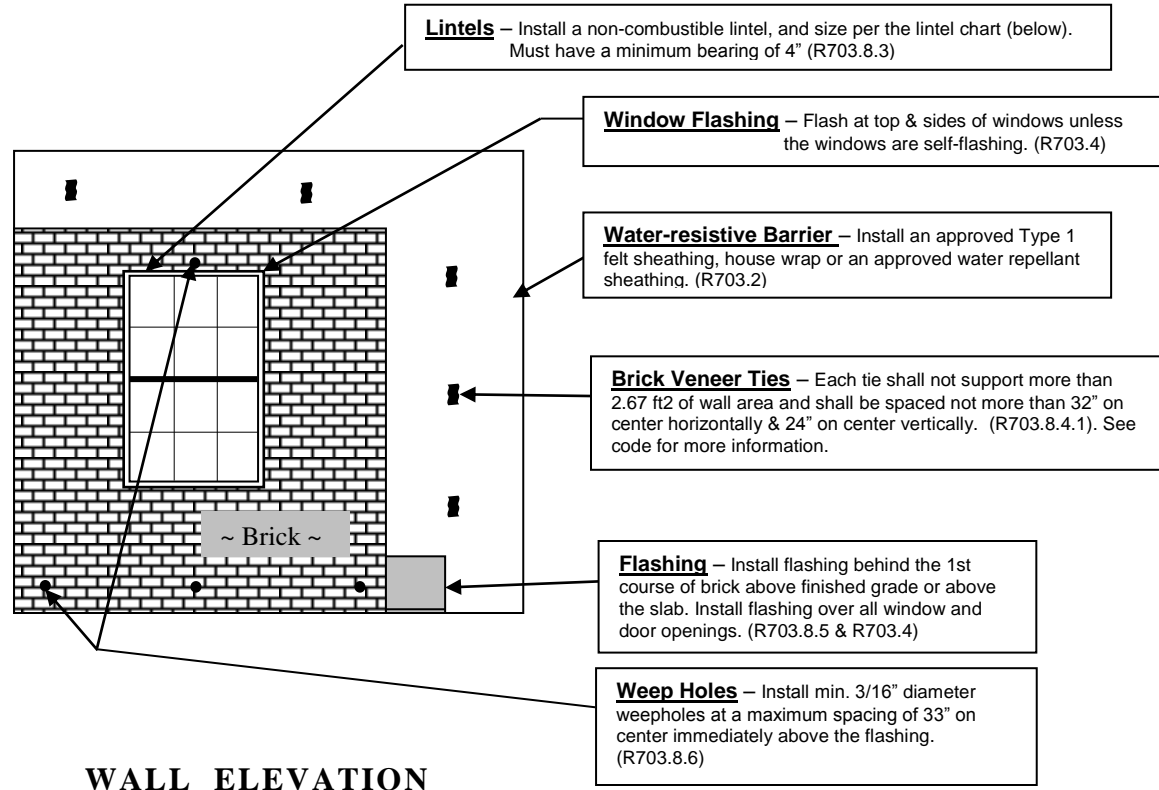


# Knox County Code Administration & Inspection

## BRICK INSTALLATION INFORMATION

REV. 022019



**WALL ELEVATION**

**TABLE R703.8.3.1** from 2018 INTERNATIONAL RESIDENTIAL CODE®  
ALLOWABLE SPANS FOR LINTELS SUPPORTING MASONRY VENEER <sup>a,b,c,d</sup>

SIZE OF STEEL ANGLE <sup>a,c,d</sup> (inches)	NO STORY ABOVE	ONE STORY ABOVE	TWO STORIES ABOVE	No. of ½" or equivalent reinforcing bars in reinforced lintel <sup>b,d</sup>
3 x 3 x ¼	6' - 0"	4' - 6"	3' - 0"	1
4 x 3 x ¼	8' - 0"	6' - 0"	4' - 6"	1
5 x 3 ½ x 5/16	10' - 0"	8' - 0"	6' - 0"	2
6 x 3 ½ x 5/16	14' - 0"	9' - 6"	7' - 0"	2
(2) 6 x 3 ½ x 5/16	20' - 0"	12' - 0"	9' - 6"	4

For SI: 1 inch = 25.4 mm, 1 foot = 304.8 mm.

<sup>a</sup> Long leg of the angle shall be placed in a vertical position.

<sup>b</sup> Depth of reinforced lintels shall not be less than 8 inches and all cells of hollow masonry lintels shall be grouted solid. Reinforcing bars shall extend not less than 8 inches into the support.

<sup>c</sup> Steel members indicated are adequate typical examples; other steel members meeting structural design requirements may be used.

<sup>d</sup> Either steel angle or reinforced lintel shall span opening.